

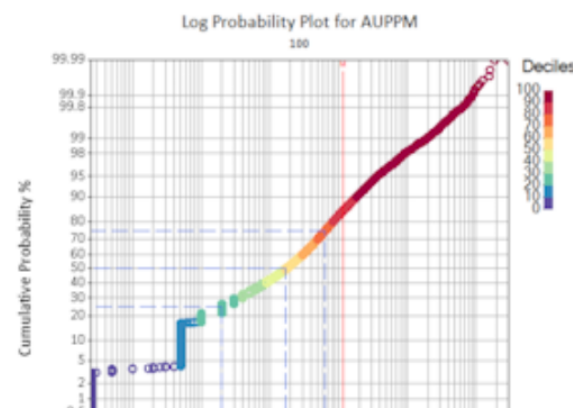
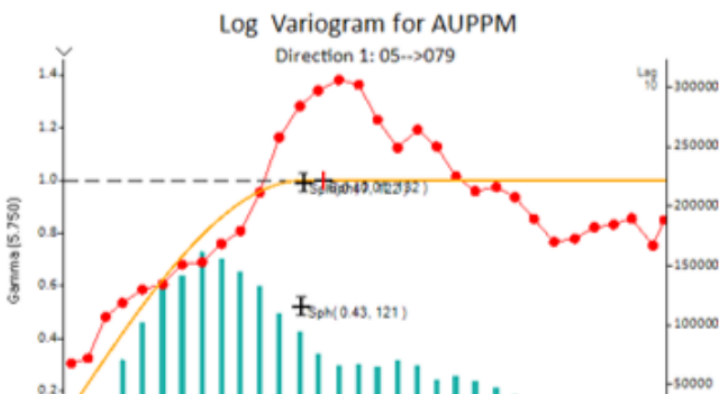
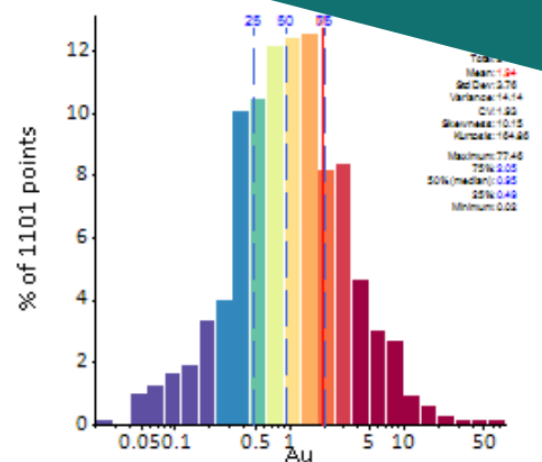
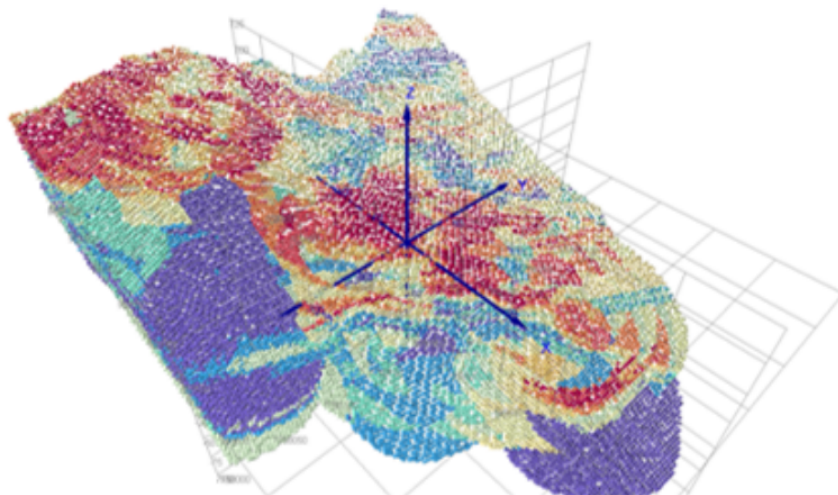
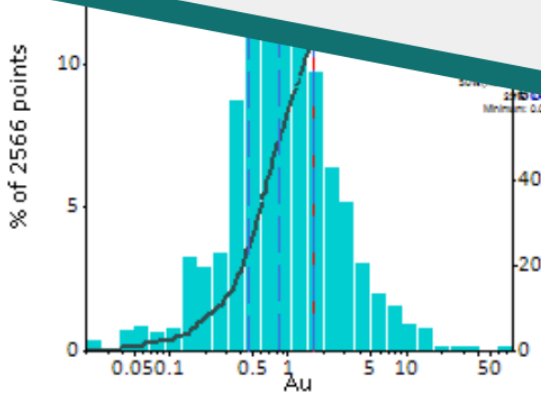
Created by Geologists, for Geologists

SUPERVISOR

The Ultimate Companion for
Resource Estimation
Professionals

Release Notes

Supervisor 9.0.3



© Copyright 2024 Datamine Software ('Snowden Optiro')

All Rights Reserved Confidential and Proprietary

Published: Friday, 19 April 2024

Legal Disclaimer

The product described in this documentation may be connected to, and/or communicate information and data via, a network interface, which should be connected to a secure network. It is your sole responsibility to ensure a secure connection to the network and to establish and maintain appropriate measures (such as but not limited to the installation of firewalls, application of authentication measures, encryption of data, installation of antivirus programs, etc.) to protect the product, the network, your systems, and the interface against any kind of security breach, unauthorised access, interference, intrusion, leakage, damage, or corruption or theft of data. We are not liable for damages or losses related to any such security breach, unauthorised access, interference, intrusion, leakage, damage, or corruption or theft of data.



Contents

What's New in Supervisor 9.0.3?	4
Upgrading a Version 8 project	5
Updating the License Manager	6
Changelog	7
Known Issues	9

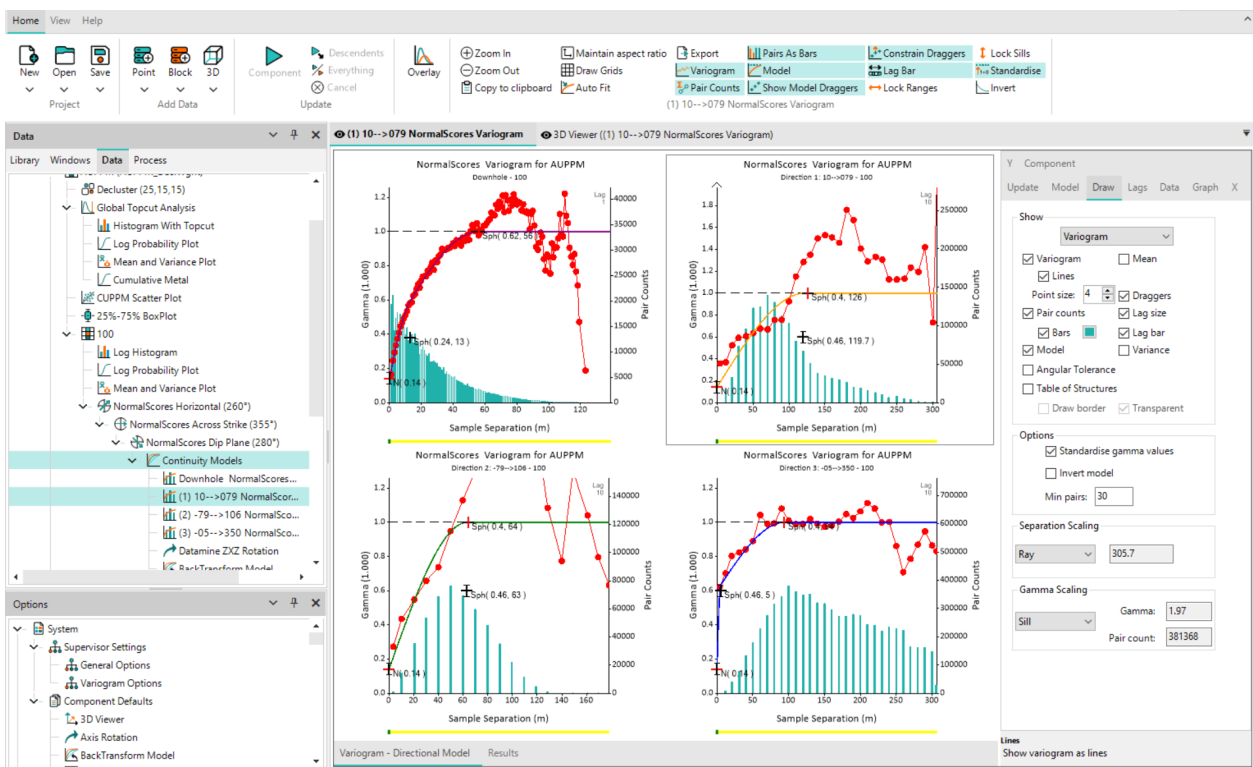


What's New in Supervisor 9.0.3?

Supervisor 9.0.3 Version 9 brings a long-deserved and significant technology upgrade to the base platform that will allow us to continue to support and develop Supervisor 9.0.3 well into the future. While there are some changes to the overall look, Version 9 remains an evolution of the previous version with no reduced functionality or changes to the core workflow. Ultimately, while we have modernised Supervisor 9.0.3, it is not a new product and therefore is accessible by anyone with a current active maintained license, subscription or rental.

Aside from the modernised user interface, users can enjoy the convenience of the new ribbon menu and utilise greater customisation new dockable windows, alongside a number of small quality of life changes. We are looking forward to your feedback which can now be provided directly from within Supervisor itself with the new 'Send Feedback' form under the Help menu. Through this form, you can optionally provide us with contact details so that we can discuss your feedback and ideas with you directly.

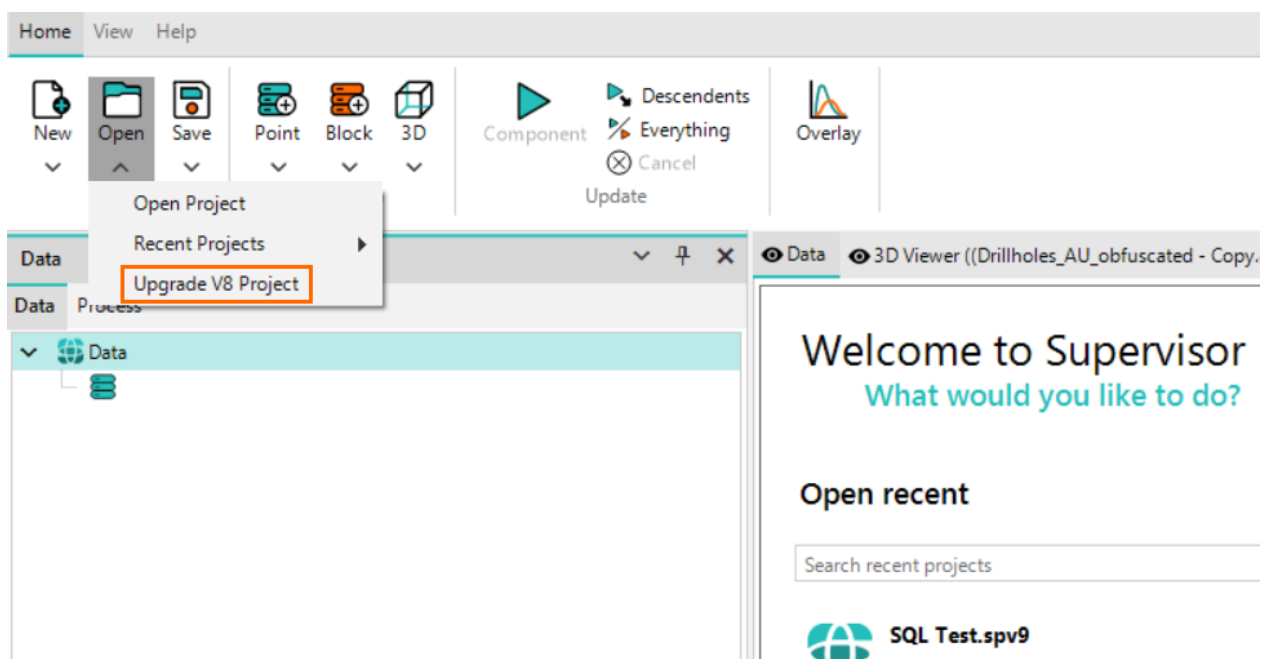
We hope that you enjoy the new Supervisor 9.0.3 experience and look forward to continuously improving our solutions into the future.



Upgrading a Version 8 project

Upgrading your Supervisor 9.0.3 projects from version 8 to version 9 is a straightforward process. Launch the Supervisor 9.0.3 application and select the 'Upgrade V8 Project' option from the **Open** menu. Select the version 8 project you wish to upgrade, and the application will create a duplicate of this project in version 9 format.

Please be patient as the creation process may take some time. Once the new project is created, it will need to be updated for the results to be regenerated. It's important to note that once a project is upgraded to version 9, it cannot be reverted back to version 8. Make sure you are ready to upgrade before proceeding.



Updating the License Manager

To ensure there is no disruption to the ongoing experience using Supervisor 9.0.3, a change has been rolled out to all existing license holders which converts current Version 8 licenses to a bundled solution. Each bundle contains two licenses, one that supports version 8 installations and one that will support all versions from 9 onwards.

The Version 9 installer comes bundled with version 6.2 of the Datamine License Manager, which should ensure that it correctly detects the new license types and structure. For any issues, please reach out to Datamine support for further assistance and troubleshooting.

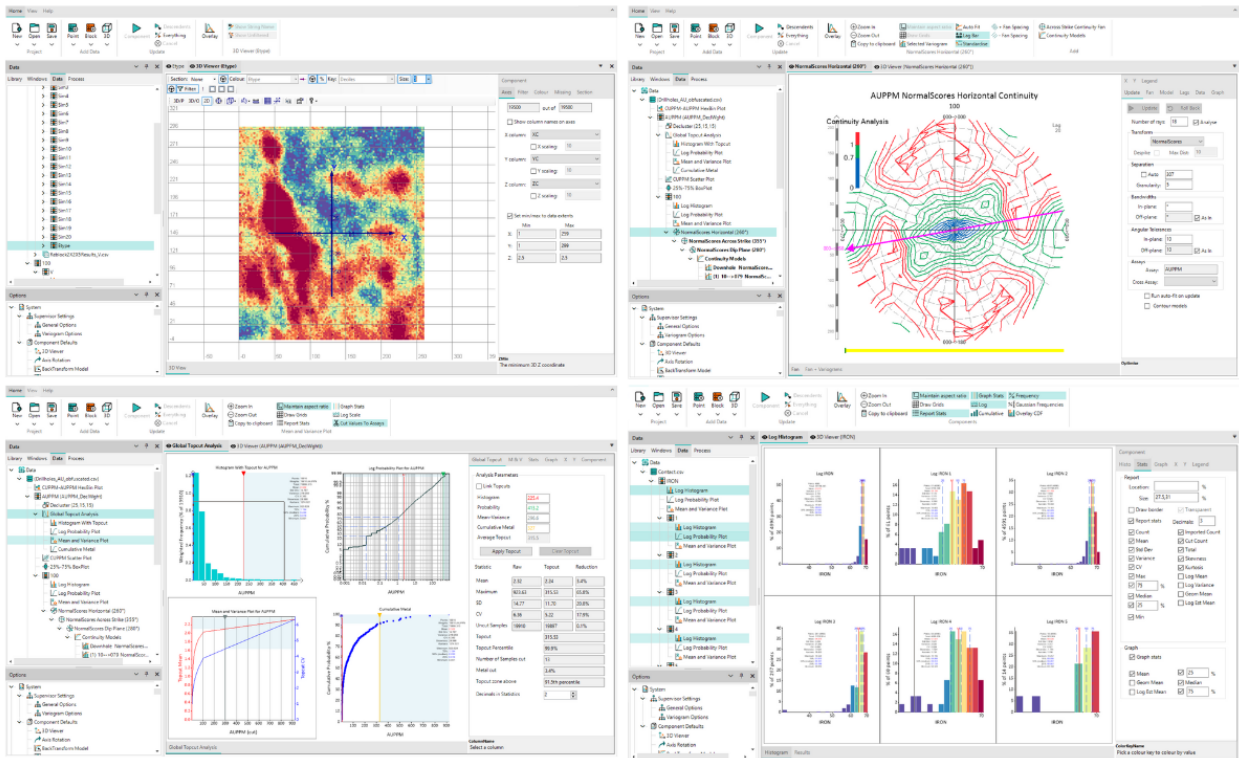


Changelog

- Improved the error message associated with trying to add a component to the Process Tree when no data is loaded.
- Removed the button link to the online LKNO video from the Property Panel.
- Fixed the resolution of vertical text to be easier to read.
- Fixed an issue that prevented interaction with the floating stats table in new components.
- Corrected the outputs for Leapfrog which could be incorrect in some situations.
- Reduced the number of decimal points for the Leapfrog conversion to enhance readability.
- The UI has been replaced with a new platform and all components have been updated to function as in version 8.
- The Histogram property panel has been redesigned.
- A Ribbon menu has been added which has all the previous functionality of the old menus and vertical toolbar.
- An error capturing tool has been added, which can automatically and anonymously report software errors to the Supervisor 9.0.3 team for early correction.
- Updated the .NET platform to version 6 and updated every component to be compatible with this version.
- Updated Supervisor 9.0.3 branding with latest logos and colour schemes.
- The about popup is more informative.
- Added a new Welcome page to the Data Tree root node.
- Updated several aspects of the Tree and Windows to allow greater user customisation.
- Anonymous usage data may now be optionally provided to the Supervisor 9.0.3 team to help identify high-use components for improvements.
- Several default colour schemes have been updated.
- Updated coloured text in the Data Loader data tables from blue to teal.
- Modified the 'ABORT UPDATING' text on the main canvas to 'UPDATING'.
- Several components in the Options tree have been renamed to be related to their actual options.
- Several Library components have had their names updated to relate to their function.
- The version number has been added to the startup splash screen.



- Updated the default colours for the Histogram and several percentile colour keys.
- Updated splash and install wizard images.



Known Issues

Known issues are non-critical bugs that are currently being developed, but were not able to be included in this release. All known issues will be resolved in the next minor release.

- When selecting multiple components, the first selected component cannot be deselected from the group.
- The line of regression on Hexbin plots is obscured by the hex elements.
- Editing multiple thresholds at a single time can cause an error.
- Changing the Y-axis label in the GT Curve component does not update the legend label.
- The Load Summary does not provide detail for each encountered loading error.
- The Cut-Off Value table in the Grade Tonnage Curve component for block models does not create a scrollable element. Workaround: The list of cutoffs can be created in an excel spreadsheet and pasted into the Cut-Off Values table.



Datamine enables efficient and sustainable mining through the application of world-leading technology and services.

Read the Docs

docs.dataminesoftware.com

Get in Touch

sales@dataminesoftware.com

www.dataminesoftware.com/support



Find Us

AUSTRALIA | BRAZIL | CANADA | CHILE | CHINA |
ECUADOR | GHANA | INDIA | INDONESIA | KAZAKHSTAN |
MALAYSIA | MEXICO | MONGOLIA | PERU | PHILIPPINES |
SOUTH AFRICA | TURKEY | UNITED KINGDOM | USA |
UZBEKISTAN



www.dataminesoftware.com



SUPERVISOR



DATAMINE